

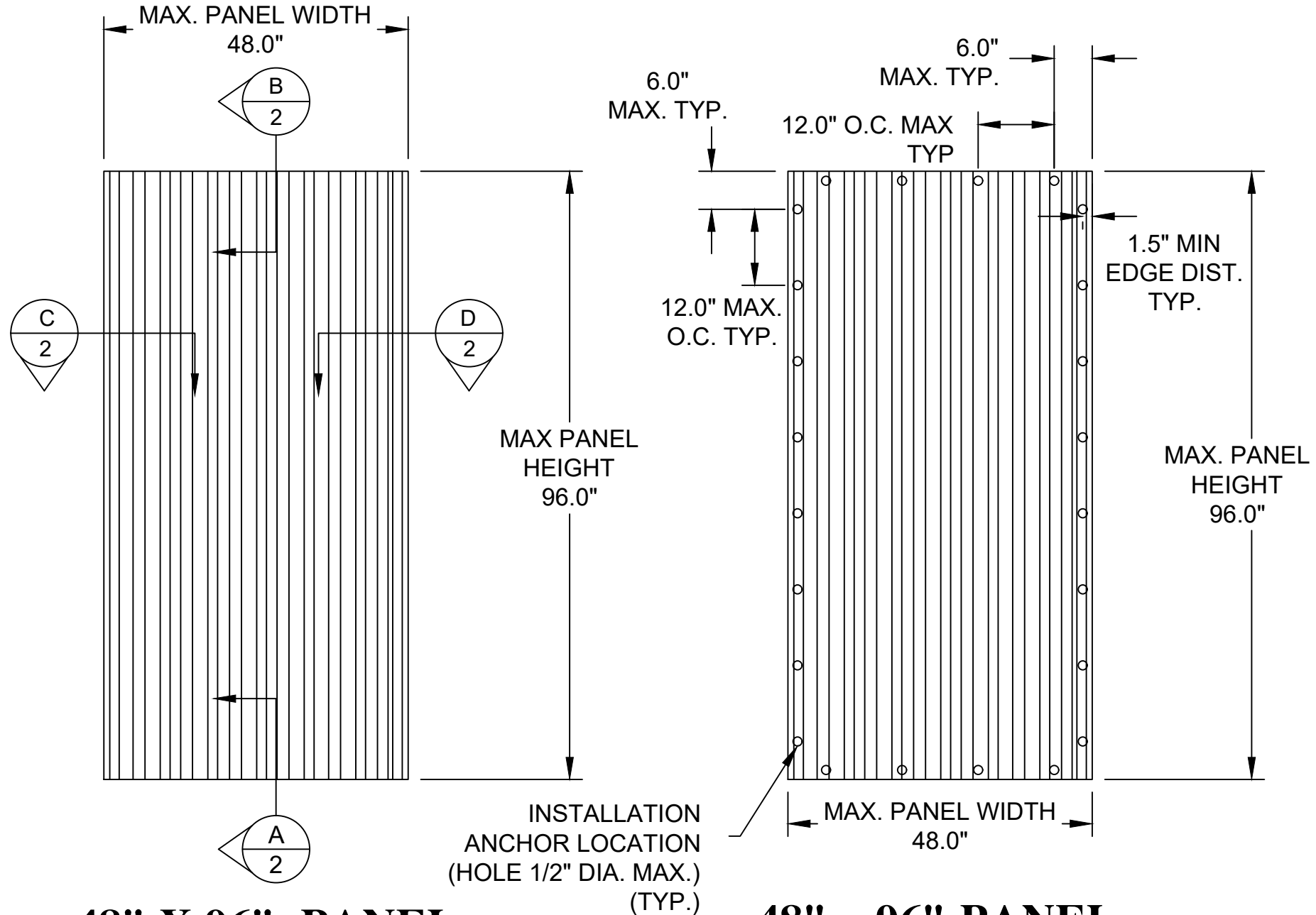
GENERAL NOTES:

1. THE PRODUCT SHOWN HEREIN IS DESIGNED TO COMPLY WITH THE CURRENT EDITION OF THE FLORIDA BUILDING CODE INCLUDING (HVHZ) HIGH VELOCITY HURRICANE ZONE.
2. THE DESIGN BASIS FOR THE PRODUCT SHOWN HEREIN IS DERIVED FROM TEST REPORT CTLA-1570W, DATED 9/11/06.
3. PANELS SHALL BE FASTENED ACCORDING TO FASTENER MANUFACTURER'S INSTALLATION SPECIFICATIONS AND AS SHOWN HEREIN.
4. PANEL FRAME MATERIAL: POLYCARBONATE (5/8").
5. MAXIMUM PANEL SIZE: 48" X 96".
6. PANELS MAY BE MOUNTED HORIZONTALLY WHERE APPLICABLE.
7. DETAIL A AND DETAIL B DEPICT TYPICAL CONCRETE / MASONRY AND WOOD ANCHORAGE CONNECTIONS, RESPECTIVELY THESE DETAILS MAY BE USED INTERCHANGEABLY AS FIELD CONDITIONS DICTATE.
8. DETAIL D AND DETAIL C DEPICT TYPICAL CONCRETE / MASONRY AND WOOD ANCHORAGE CONNECTIONS, RESPECTIVELY. THESE DETAILS MAY BE USED INTERCHANGEABLY AS FIELD CONDITIONS DICTATE.
9. MINIMUM REQUIRED SEPARATION 2 3/4" BETWEEN PRODUCT AND EXISTING GLASS.
10. CONCRETE / MASONRY OPENING AND 2X BUCKS ARE TO BE DESIGNED AND ANCHORED TO PROPERLY TRANSFER ALL LOADS TO STRUCTURE. CONCRETE / MASONRY OPENING AND 2X BUCKS ARE THE RESPONSIBILITY OF THE ARCHITECT OR ENGINEER OF RECORD.
11. PRODUCTS SHOWN HEREIN ARE APPROVED FOR USE WHERE LARGE MISSILE IMPACT RESISTANCE IS REQUIRED.
12. SEE DESIGN PRESSURE RATINGS ON THIS SHEET.
13. ALL INSTALLATION ANCHORS AND ASSOCIATE HARDWARE MUST BE MADE OF CORROSION RESISTANT MATERIAL OR HAVE A CORROSION RESISTANT COATING. DISSIMILAR METALS OR MATERIALS IN CONTACT WITH PRESSURE TREATED WOOD MUST BE PROTECTED TO PREVENT REACTION.

INSTALLATION NOTES:

1. ONE (1) ANCHOR IS REQUIRED AT EACH INSTALLATION ANCHOR LOCATION SHOWN.
2. SPACE INSTALLATION ANCHORS 6" FROM EACH CORNER AND 12" O.C. MAXIMUM.
3. MINIMUM ANCHOR SPACING OF 6".
4. FOR CONCRETE / MASONRY INSTALLATION USE 1/4" ELCO PANELMATE OR ITW TAPCON SG W/ WASHERED WING NUTS WITH 1/4" x 2" O.D. STEEL FLAT WASHER AND 1/4" x 1 1/2" O.D. RUBBER FLAT WASHER. MINIMUM EMBEDMENT AND EDGE DISTANCE AS SHOWN IN TABLE ON SHEET 3.
5. FOR WOOD FRAMING INSTALLATION USE 1/4" ELCO PANELMATE OR ITW TAPCON STORM GUARD (SG) W/ WASHERED WING NUTS, 1/4" x 2" O.D. STEEL FLAT WASHER AND 1/4" x 1 1/2" O.D. RUBBER FLAT WASHER. MINIMUM EMBEDMENT AND EDGE DISTANCE AS SHOWN IN TABLE ON SHEET 3.

STORM DEPOT OF AMERICA, INC
DBA STORM BUSTERS
16MM CLEARVIEW POLYCARBONATE STORM PANELS FOR HVHZ
INSTALLATION ANCHORAGE DETAILS



48" X 96" PANEL
EXTERIOR ELEVATION

48" x 96" PANEL
ANCHOR LAYOUT

PERFORMANCE RATING TABLE	
DESIGN PRESSURE RATING (PSF)	IMPACT RATING
+/-50 PSF	HVHZ LARGE MISSILE IMPACT

TABLE OF CONTENTS	
SHEET	SHEET DESCRIPTION
1	ELEVATIONS, ANCHOR LAYOUT, & NOTES
2	CROSS SECTIONS & DETAILS
3	BILL OF MATERIALS & COMPONENTS

PROJECT NUMBER: 415-0711			R/A	TJH	JJ	BY
			10/1/15	08/21/12	8/28/07	DATE
		UPDATE TO CURRENT EDITION OF THE FBC	C	B	A	REV
		UPDATE TO 2007 AND 2010 FBC			AS REQUESTED BY MIAMI DADE	DESCRIPTION

STORM DEPOT OF AMERICA, INC. dba STORM BUSTERS
 720 N. HARBOR CITY BLVD.
 MELBOURN, FLORIDA 32995

TITLE: CLEARVIEW POLYCARBONATE STORM PANEL

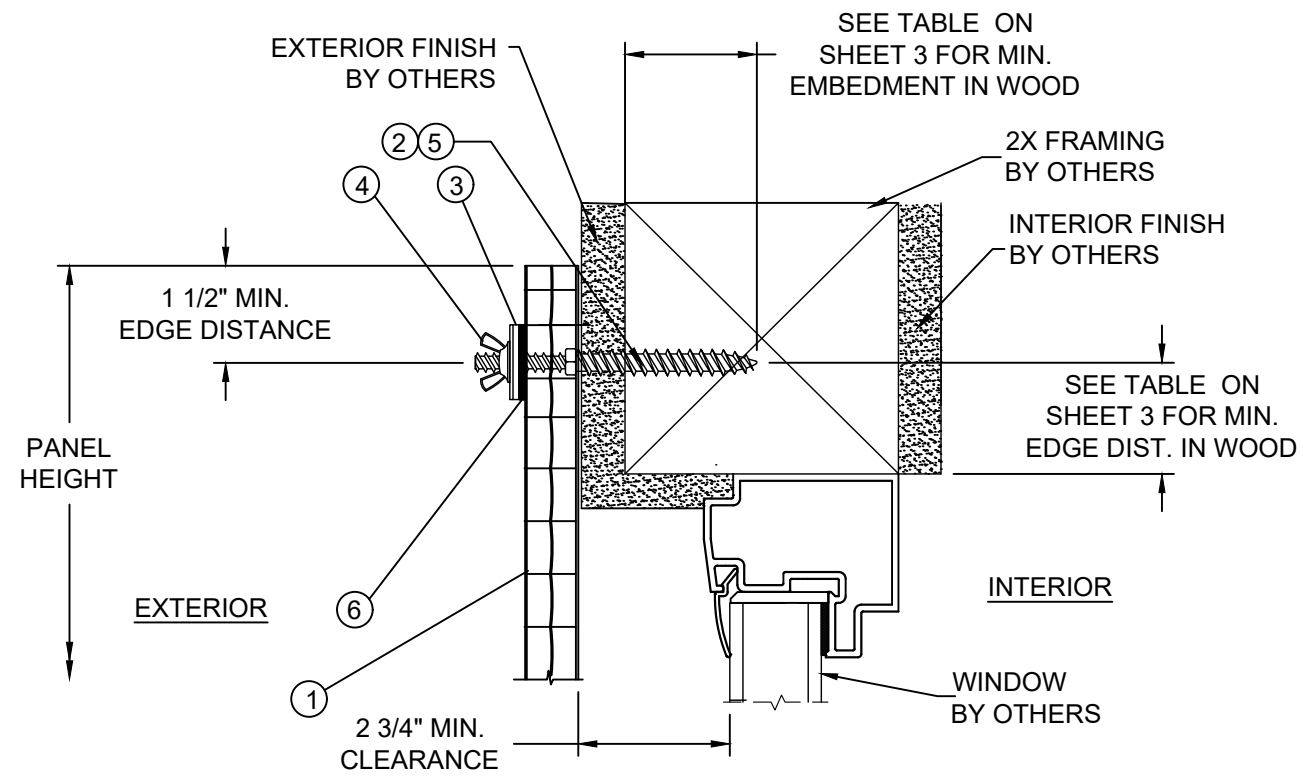
ELEVATIONS, ANCHORING LAYOUT & NOTES

DATE: 3/08/2007
 DRAWING NO: STB0013
 SHEET: 1 OF 3

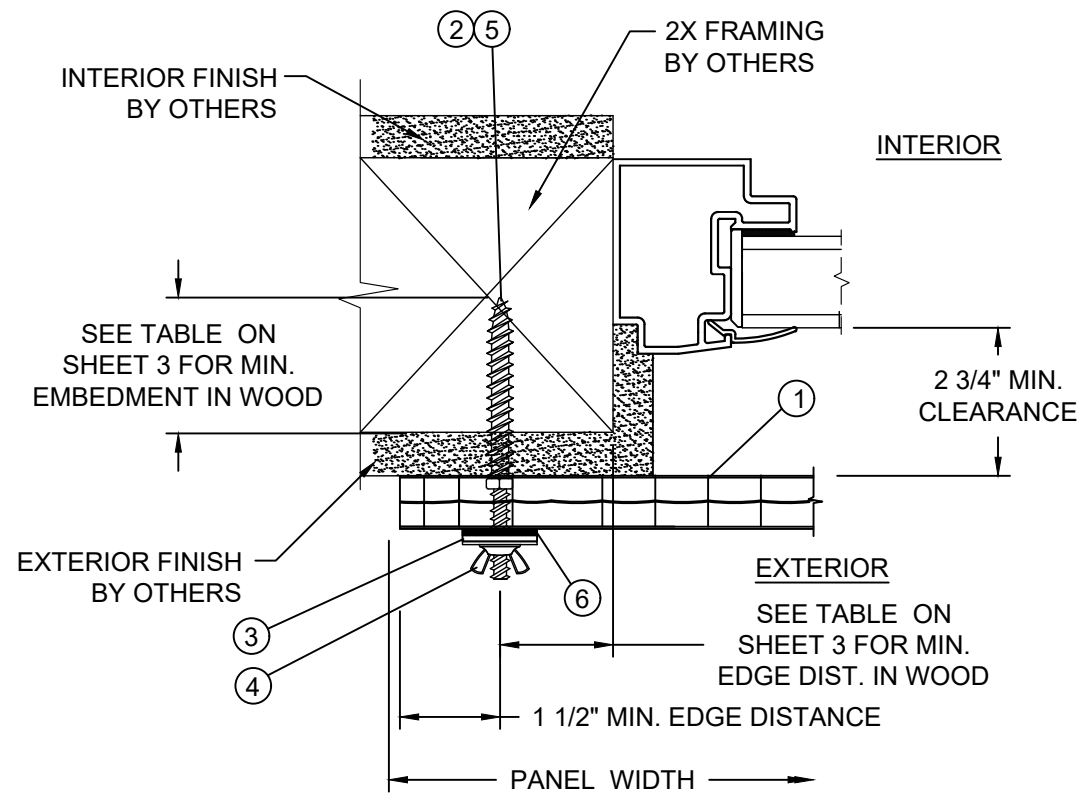
PREPARED BY: HFN
 SCALE: N.T.S.
 REV: C

PTC PRODUCT DESIGN GROUP, LLC
 PO BOX 520775
 LONGWOOD, FLORIDA 32752
 Phone: 321.690.1788
 Fax: 321.690.1789
 Email: info@pdc-corp.com

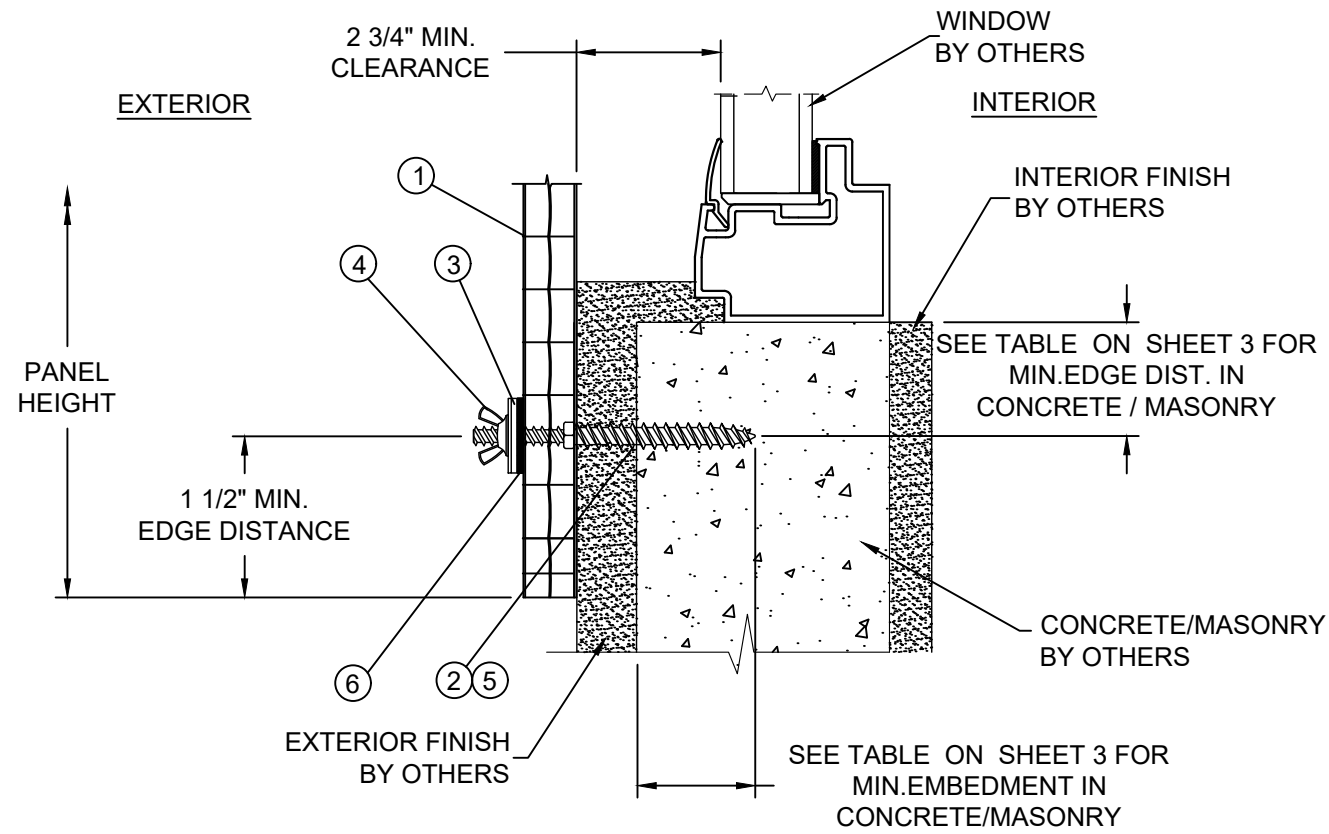
Robert J. Amoruso, P.E.
 FL P.E. No. 49752



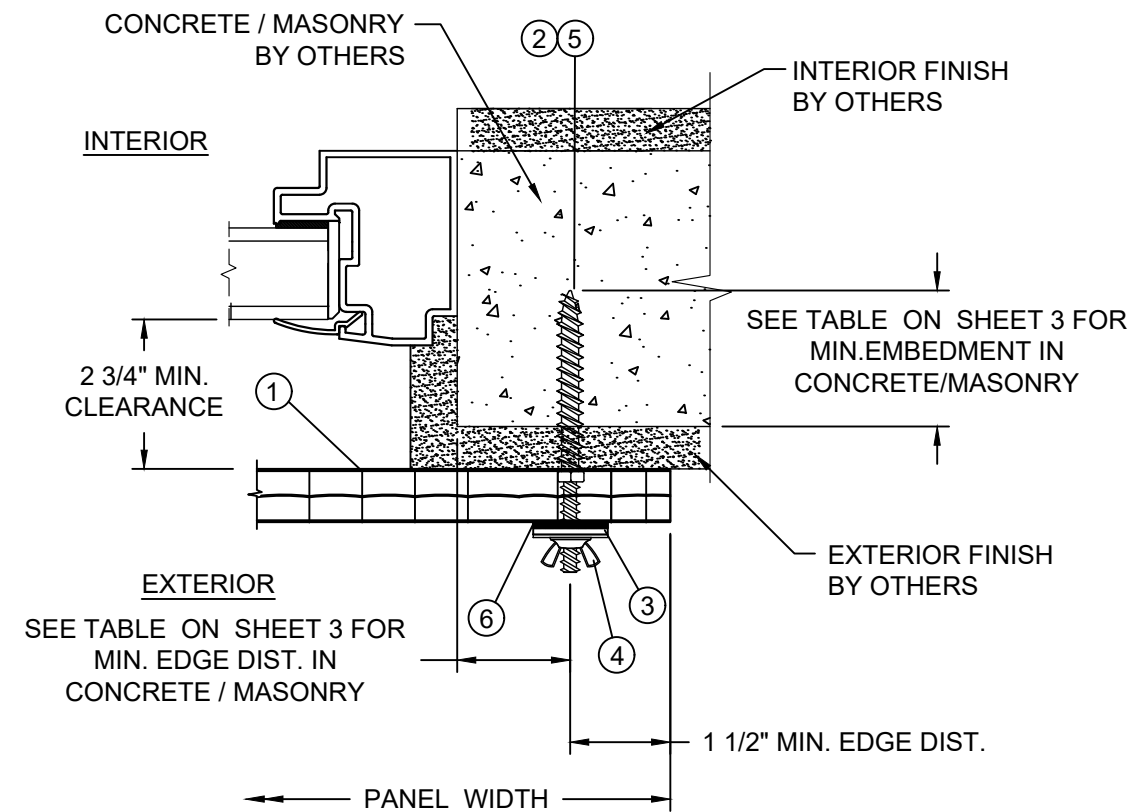
B VERTICAL SECTION
2 WOOD FRAMING SUBSTRATE



C HORIZONTAL SECTION
2 WOOD FRAMING SUBSTRATE



A VERTICAL SECTION
2 CONCRETE / MASONRY SUBSTRATE



D HORIZONTAL SECTION
2 CONCRETE / MASONRY SUBSTRATE

PROJECT NUMBER:	415-0711
DATE:	10/1/15
DESCRIPTION:	UPDATE TO CURRENT EDITION OF THE FBC
DATE:	08/21/12
DESCRIPTION:	UPDATE TO 2007 AND 2010 FBC
DATE:	8/28/07
DESCRIPTION:	AS REQUESTED BY MIAMI DADE
DATE:	
DESCRIPTION:	

STORM DEPOT OF AMERICA, INC. dba STORM BUSTERS
720 N. HARBOR CITY BLVD.
MELBOURN, FLORIDA 32995

TITLE: CLEARVIEW POLYCARBONATE STORM PANEL

CROSS SECTIONS & DETAILS

DATE: 3/08/2007
DRAWING NO: STB0013
SHEET: 2 OF 3

DRAWN BY: HFN
SCALE: N.T.S.
REV: B

PTC PRODUCT DESIGN GROUP, LLC
10000 W. BAYVIEW BLVD., SUITE 300
LONGWOOD, FLORIDA 32752
Phone: 321.690.1788
Fax: 321.690.1789
Email: info@ptc-corp.com

Robert J. Amoruso, P.E.
FL P.E. No. 49752

**INSTALLATION ANCHOR
TABLE OF MINIMUM EMBEDMENTS AND EDGE DISTANCES**

Substrate	1/4" ITW TAPCON STORM GUARD (SG)			1/4" ELCO MALE PANELMATE PRO		
	SUBSTRATE STRENGTH	EMBEDMENT DEPTH (IN)	EDGE DISTANCE (IN)	SUBSTRATE STRENGTH	EMBEDMENT DEPTH (IN)	EDGE DISTANCE (IN)
CONCRETE	2500 PSI	1	1 1/4	2500 PSI	2	1
HOLLOW BLOCK	ASTM C90, MEDIUM WEIGHT DENSITY	1 1/4	1 1/4	2500 PSI	1 1/4	2
GROUT FILLED BLOCK	ASTM C90, MEDIUM WEIGHT DENSITY W/O GROUT FILLING PER FBC	1 3/4	1 1/4	2500 PSI	1 1/4	2
WOOD	0.55 S.G.	1 1/2	3/4	0.54 S.G.	1 7/8	3/4

NOTES:

- TABLE VALUES CORRESPOND TO MANUFACTURER'S PUBLISHED DATA FOR 1/4 INCH ANCHORS.
- TABLE VALUES INDICATE MINIMUM EMBEDMENT AND EDGE DISTANCE.
- FOR HOLLOW BLOCK AND GROUT FILLED BLOCK DO NOT INSTALL ANCHORS INTO MORTAR JOINTS. EDGE DISTANCE IS MEASURED FROM FREE EDGE OF BLOCK OR EDGE OF MORTAR JOINT INTO FACE SHELL OF BLOCK.
- TABLE VALUES CORRESPOND TO THE MINIMUM EMBEDMENTS AND EDGE DISTANCES PER SUBSTRATE.
- USE OF THESE EMBEDMENT DEPTHS AND EDGE DISTANCES WITH THE CORRESPONDING ANCHOR TYPE PROVIDES ANCHOR CAPACITIES ADEQUATE FOR THE APPLIED DESIGN PRESSURE INDICATED HEREIN.

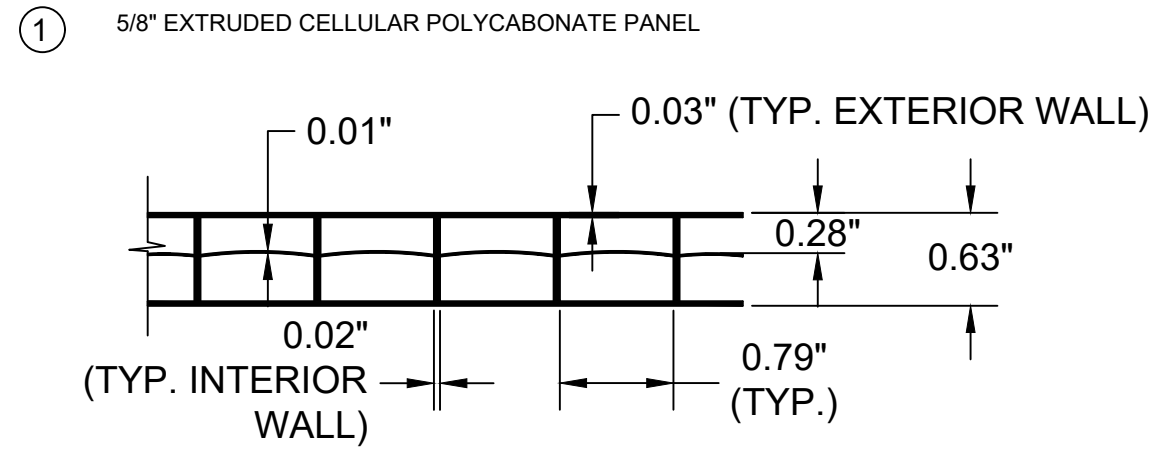
CLEARVIEW PRODUCT PROPERTIES

(REFERENCE 1: ARCHITECTURAL TESTING REPORT NO. 67803.1-106-18, DATED 11/28/06)
(REFERENCE 2: PRI CONSTRUCTION MATERIALS TEST REPORT NO. BML-001-02-01, DATED 7/23/07)

TEST DESCRIPTION	TEST METHOD	RESULTS	
SELF IGNITION TEMPERATURE	ASTM D1929-96	>500°C (982°F)	
FLASH IGNITION TEMPERATURE	ASTM D1929-96	459°C (858°F)	
SMOKE DENSITY RATING	ASTM D2843-99	53.1	
LINEAR RATE OF BURN	ASTM D635-03	CC1	
TENSILE STRENGTH (MEAN)	ASTM D638-03	8730 PSI	9223 PSI *
		BEFORE	AFTER

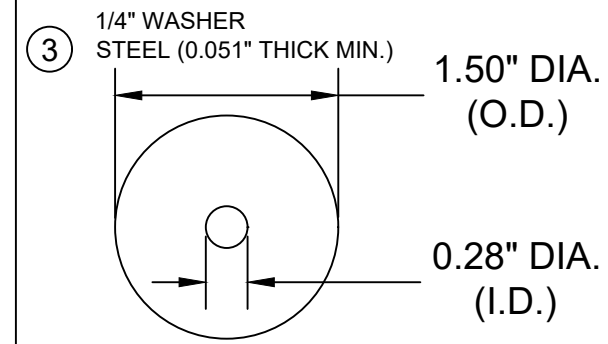
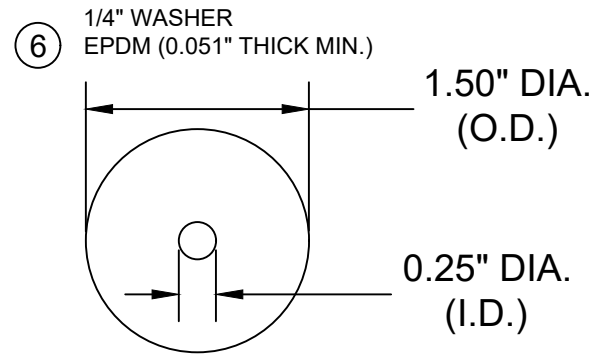
* THE CHANGE IN THE AVERAGE TENSILE STRESS OF THIS MATERIAL BETWEEN THE UNEXPOSED AND 4500 HOUR ASTM G 26 WEATHEROMETER EXPOSED SAMPLES WAS 5.6 PERCENT.

BILL OF MATERIALS				
ITEM #	PART #	DESCRIPTION	MATERIAL	VENDOR
1	----	STORM-BUSTERS CLEARVIEW 16MM (5/8") POLYCARBONATE STORM PANEL	MARLON ST LONGLIFE MULTIWALL POLYCARBONATE SHEET	BRETT MARTIN LTD.
2	----	1/4" PANELMATE MALE FASTENER	STEEL	ELCO
3	----	1/4" STEEL WASHER	STEEL	----
4	----	1/4-20 ZAMAC NICKEL PLATED WASHERED WINGNUT	STEEL	----
5	----	1/4" TAPCON STORM GUARD (SG)	STEEL	ITW BUILDEX
6	----	1/4" EPDM WASHER	EPDM RUBBER	----



- ② 1/4" PANELMATE PRO MALE FASTENER (ELCO)
- ⑤ 1/4" TAPCON SG (ITW BUILDEX)

- ④ 1/4-20 ZAMAC NICKEL PLATED WASHERED WINGNUT



PROJECT NUMBER:	415-0711
DATE	10/1/15
BY	RJA
DATE	08/21/12
BY	TJH
DATE	8/28/07
BY	JJ
DATE	
DESCRIPTION	AS REQUESTED BY MIAMI DADE
REV	A
DESCRIPTION	UPDATE TO 2007 AND 2010 FBC
REV	B
DESCRIPTION	UPDATE TO CURRENT EDITION OF THE FBC
REV	C

STORM DEPOT OF AMERICA, INC. dba STORM BUSTERS
720 N. HARBOR CITY BLVD.
MELBOURN, FLORIDA 32995

TITLE: CLEARVIEW POLYCARBONATE STORM PANEL

PREPARED BY: BILL OF MATERIALS & COMPONENTS

DRAWN BY: HFN DATE: 3/08/2007

SCALE: N.T.S. DRAWING NO: STB0013

REV: C SHEET: 3 OF 3

PTC PRODUCT DESIGN GROUP, LLC
PO BOX 520775
LONGWOOD, FLORIDA 32752
Phone: 321.690.1788
Fax: 321.690.1789
Email: info@ptc-corp.com

Robert J. Amoruso, P.E.
FL P.E. No. 49752